

INSTALLATION INSTRUCTIONS

Rev. 2

MODEL NO. 82112

APPLICATION:

2007-Current Acura RDX

WARNING

Although this hitch is designed to safely tow its rated load, we recommend that you consult your vehicle owner's manual for possible manufacturer's recommendations or limitations. Always follow the manufacturer's installation instructions and always install on the specified vehicle. Before installing hitch, check that the attachment points are in good condition.

Failure to follow these guidelines will void warranty. Any modifications to this hitch will void warranty.

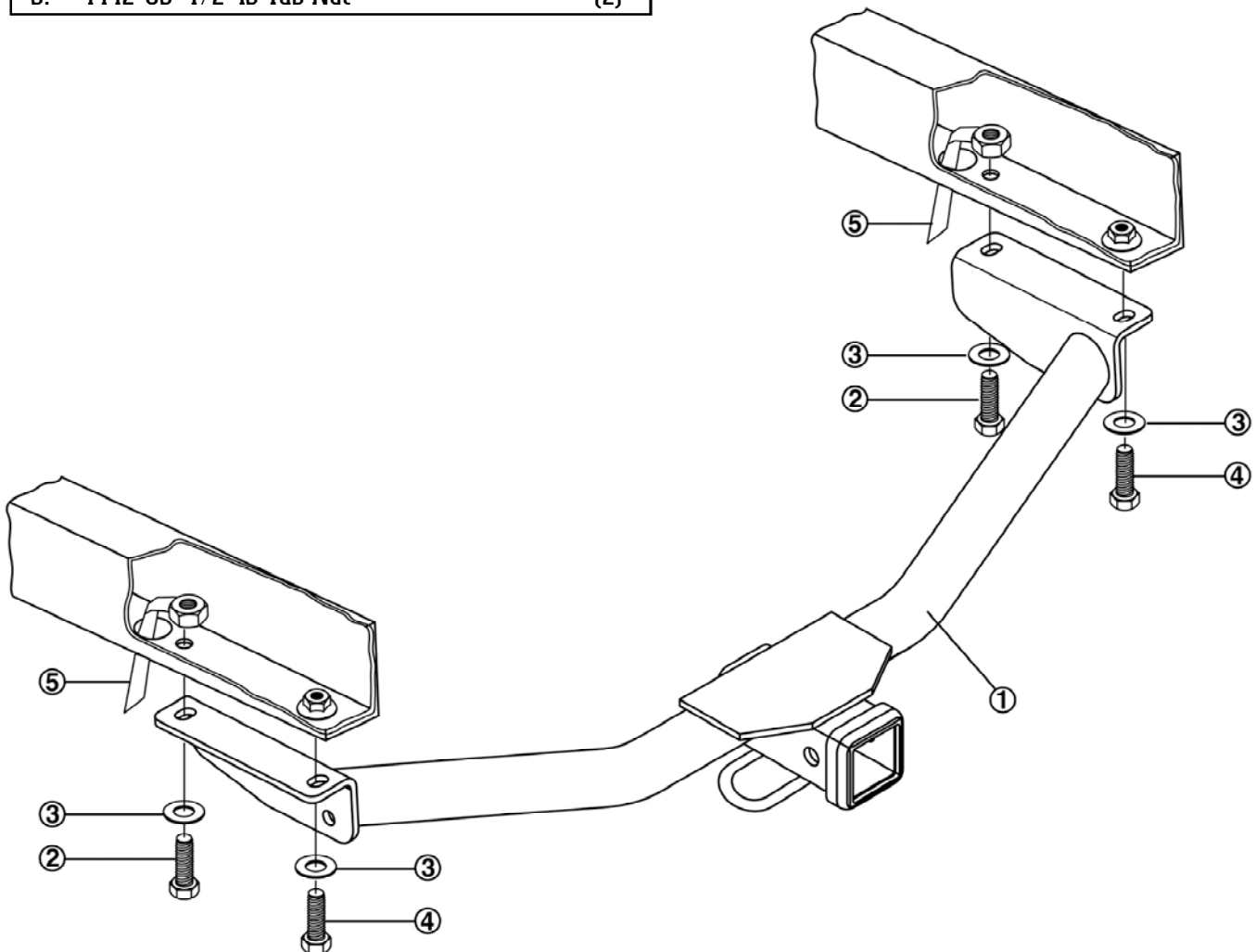
WEIGHT CARRYING HITCH CAPACITY

**4000 LBS. MAXIMUM TRAILER WEIGHT
400 LBS. MAXIMUM TONGUE WEIGHT**

Trailer brakes are recommended for towing loads in excess of 1500 lbs.

COMPLETE PARTS LIST

Part	Description	Quantity
1.	Receiver Assembly	(1)
2.	1836-03 1/2-13 x 1-1/2 Hex Bolt	(2)
3.	3730-05 1/2 Conical Washer	(4)
4.	3732-02 M12 -1.25 x 40 Hex Bolt	(2)
5.	4442-03 1/2-13 Tab Nut	(2)



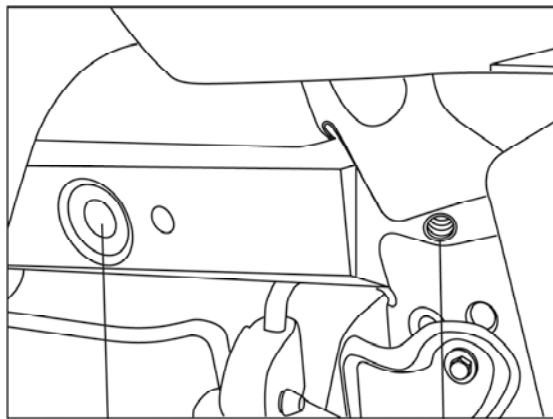
1. Position the hitch assembly against the bottom of the SUV frame so that the holes in each frame bracket are aligned with the two open holes and the two weldnut holes in SUV frame. Loosely bolt hitch in place at the weldnuts in frame using M12 -1.25 x 40 Hex Bolts #4 and 1/2 Conical Washers #3.
2. Insert 1/2-13 Tab Nut #5 into access hole in SUV frame. Bend and adjust the tab so that the nut is located over bolt hole in SUV frame. Insert 1/2-13 x 1-1/2 Hex Bolts #2 and 1/2 Conical Washers #3 through hitch bracket and SUV frame and mount to 1/2-13 Tab Nuts #5.
3. Tighten the M12 -1.25 x 40 Hex Bolts to 94 ft. lbs. torque and the 1/2-13 x 1-1/2 Hex Bolts to 75 ft. lbs. torque. Failure to tighten bolts as described may result in fastener loss or failure.

WARNING: Use only a 5/8" diameter hitch pin with locking device to secure a ball mount in this receiver.

WARNING: Be sure to check the hitch pin and hair pin for positive locking placement before towing trailer.

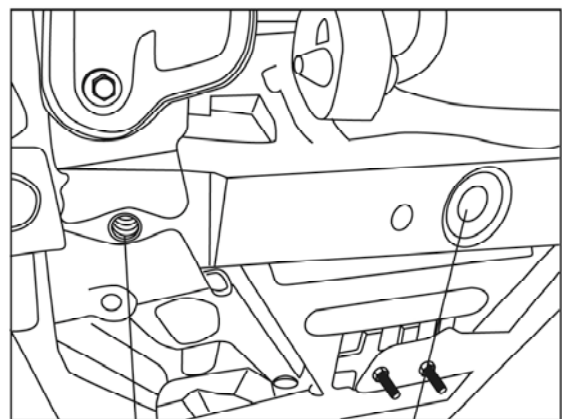
NOTE: When hitch is not being used, remove ball mount from receiver and place the receiver cover into receiver opening.

NOTE: Some states require a clear view of license plates. Remove trailer ball and/or ball mount when not in use if it restricts view



ACCESS HOLE

WELDNUT IN FRAME



WELDNUT IN FRAME

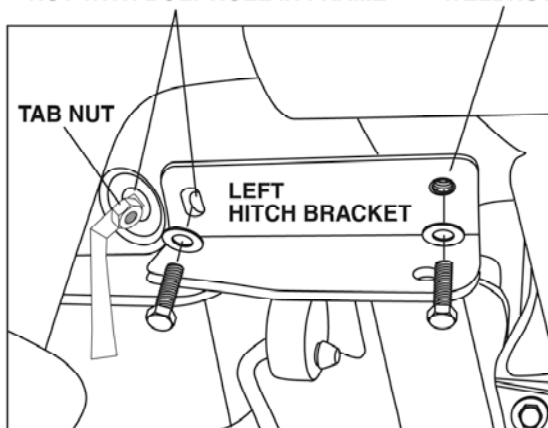
ACCESS HOLE

PUT TAB NUT THROUGH ACCESS HOLE AND LINE UP NUT WITH BOLT HOLE IN FRAME

INSERT BOLT INTO WELDNUT

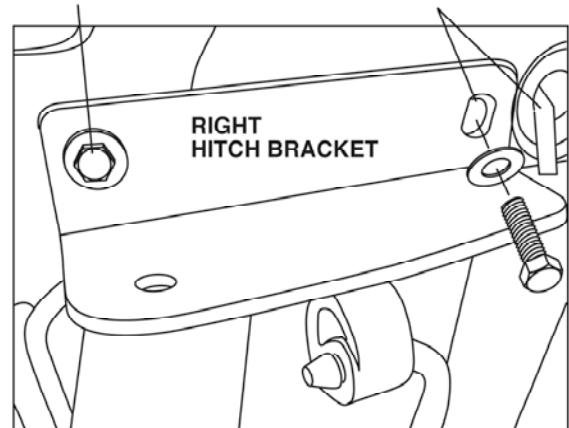
INSERT BOLT INTO WELDNUT

PUT TAB NUT THROUGH ACCESS HOLE AND LINE UP NUT WITH BOLT HOLE IN FRAME



TAB NUT

LEFT HITCH BRACKET



RIGHT HITCH BRACKET

For information regarding this product, or our warranty, contact your dealer or write to:
"CUSTOMER SERVICE MANAGER" P.O. Box 850, Lodi, CA 95241

This product complies with regulation V-5, C.S.A Standard D-264 and safety requirements for connecting devices and towing systems of the State of New York