

INSTALLATION INSTRUCTIONS

Rev. 3

MODEL NO. 82000

39607

APPLICATION:

2005-07 Buick Terraza

2005-09 Chevrolet Uplander

2005-09 Pontiac Montana SV6

2005-07 Saturn Relay

WARNING: Although this hitch is designed to safely tow its rated load, we recommend that you consult your vehicle owner's manual for possible manufacturer's recommendations or limitations. Trailer brakes are recommended for towing loads in excess of 1500 lbs. Always follow the manufacturer's installation instructions and always install on the specified vehicle. Before installing hitch, check that the attachment points are in good condition.

Failure to follow these guidelines will void warranty. Any modifications to this hitch will void warranty.

WARNING: Use only a 5/8" diameter hitch pin with locking device to secure a ball mount in this receiver. Be sure to check the hitch pin and hair pin for positive locking placement before towing trailer.

NOTE: Some states require a clear view of license plates. Remove trailer ball and/or ball mount when not in use if it restricts view.

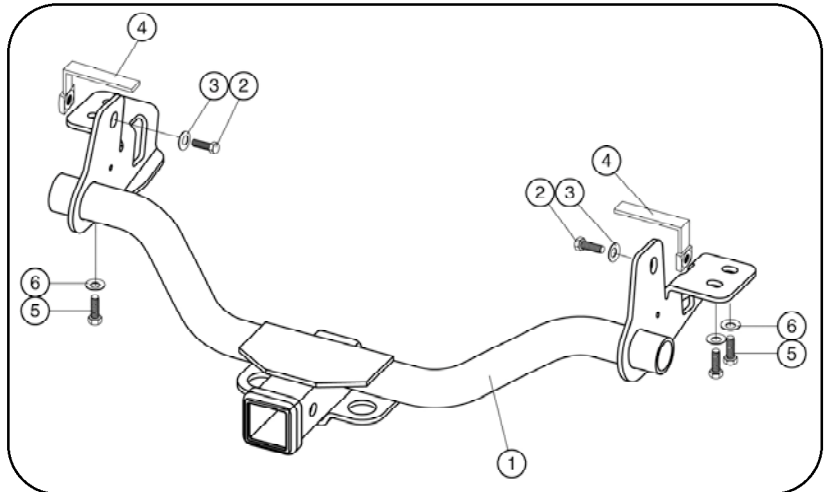
COMPLETE PARTS LIST

Item	Part #	Description	Quantity
1.		Receiver Assembly	1
2.	1837-03	1/2-13 x 1-3/4" Hex Cap Screw	2
3.	3730-05	1/2 Conical Toothed Washer	2
4.	4442-03	1/2-13 x 6 Tab Nut	2
5.	1146-01	10mm x 35 x 1.50 Hex Cap Screw	3
6.	2300-07	3/8 Conical Toothed Washer	3

CLASS II

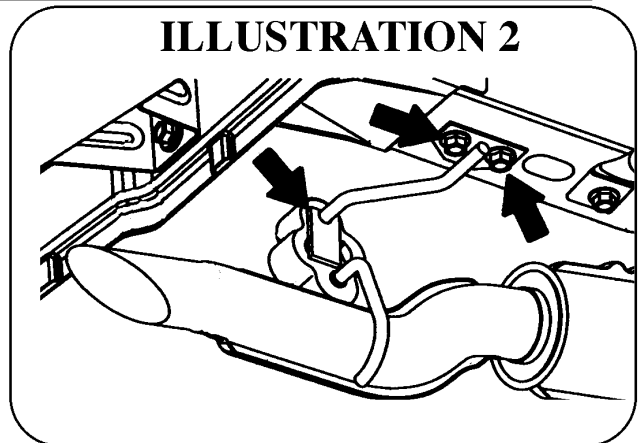
WEIGHT CARRYING HITCH CAPACITY

3,500 LBS. MAXIMUM TRAILER WEIGHT
350 LBS. MAXIMUM TONGUE WEIGHT



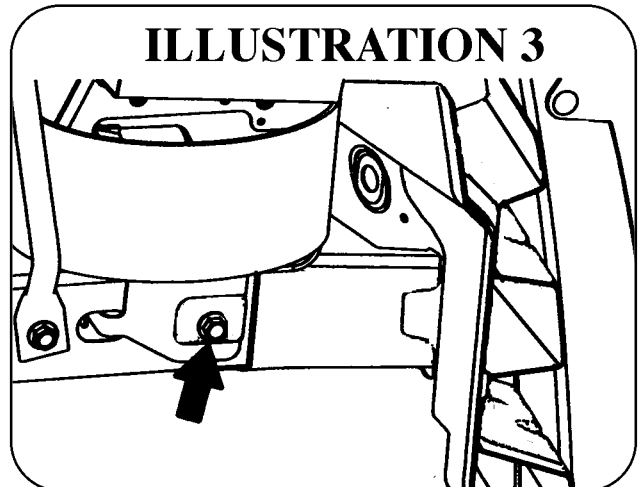
1. Lower the spare tire from its storage location. It will be put back in place after hitch is installed.

2. Remove tailpipe hanger rod from its rubber support. See Illustration 2.



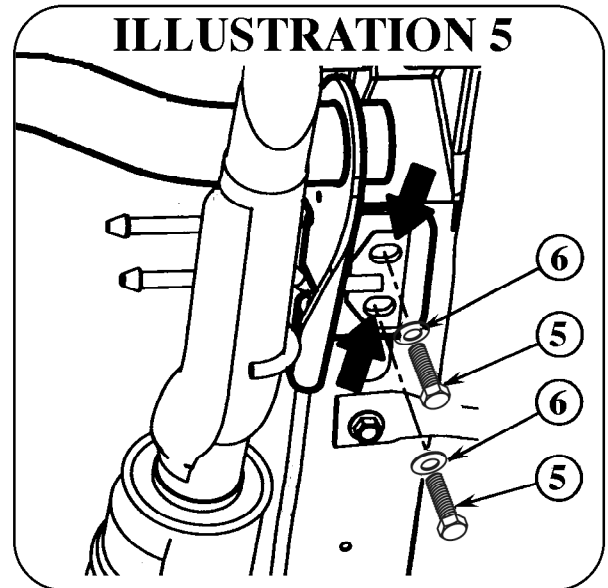
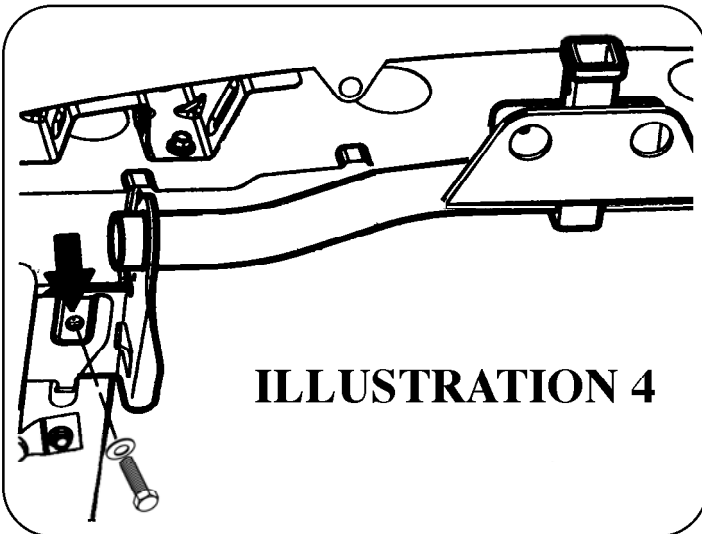
3. Remove and discard two 10mm bolts that attach the tailpipe hanger bracket to the bottom of the right side vehicle frame

4. Remove and discard the 10mm bolt that attaches the load-leveling compressor on the drivers side frame. See Illustration 3.

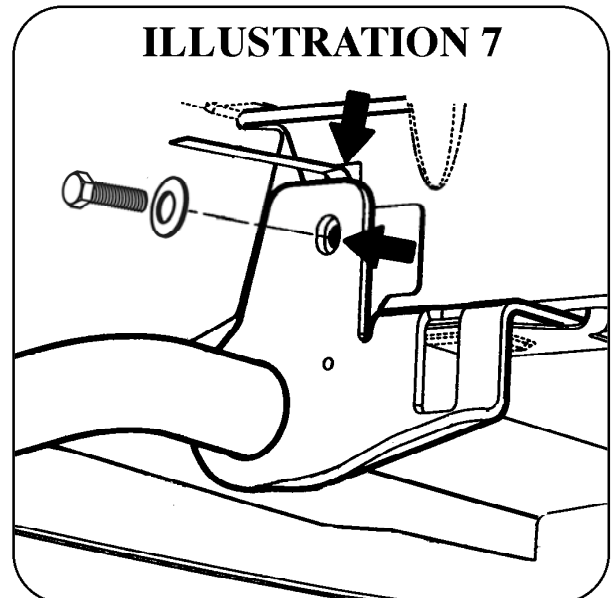
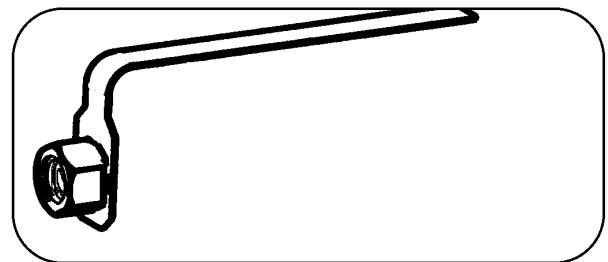


5. Raise hitch into position and align holes in hitch with the weld nuts in the vehicle frame where bolts were previously removed. The driver side hitch bracket must slide underneath the compressor bracket.
6. On the drivers side, using one 10mm bolt and 3/8 Conical Washer, secure the compressor and hitch bracket to frame rail. See Illustration 4.

On the passenger side, place the exhaust hanger bracket into its original position on top of hitch bracket, (rod end through opening in hitch bracket on AWD vehicles), and secure hanger and hitch bracket to frame rail using the 10mm bolts and lockwashers. See Illustration 5.



7. Bend handle nuts as shown.
8. Insert handle nuts into slot on the inside of the drivers side frame rail. Insert the 1/2" Bolt and Conical Washer through vertical portion of hitch bracket and into frame rail and handle nut. Repeat procedure on passenger side of vehicle.
9. Tighten the 10mm bolts to 42 ft. lbs. torque and the 1/2" bolts to 75 ft. lbs. torque. Failure to tighten bolts as described may result in bolt loss or failure.
10. Reinstall the tailpipe's rubber support to the end of the hanger rod (AWD vehicles only).
11. Raise spare tire into its storage location.



For information regarding the installation of this product, go to: www.towingsupport.com
or Email us at: tech@towingsupport.com or Call our Technical Support Team at: 1-800-344-3230

This product complies with regulation V-5, C.S.A Standard D-264 and safety requirements for connecting devices and towing systems of the State of New York