

INSTALLATION INSTRUCTIONS

Rev. 1

MODEL NO. 81090 41503

- APPLICATION:**
- 1963-2000 Chevrolet/GMC C/K P/U (full size)
 - 1988-98 Chevrolet/GMC P/U (full size short bed)
 - 1967-72 Chevrolet/GMC Suburban
 - 1974-85 Dodge Ramcharger (except with skid plate)
 - 1963-93 Dodge P/U (full size)
 - 1994-98 Dodge P/U (full size)*
 - 1960-96 Ford P/U (full size) 37-1/2" O.D. Frame Width
 - 1997-98 Ford F 250 HD & F 350 HD P/U (over 8500 GVW)
 - 1978-96 Ford Bronco
 - 1960-75 International P/U
 - 1967-74 International Travelall
 - 1974-83 Plymouth Trail Duster (except with skid plate)

*Spacer kit #2150-03 may be needed on some Dodge applications. See Dodge instructions.

WARNING: Although this hitch is designed to safely tow its rated load, we recommend that you consult your vehicle owner's manual for possible manufacturer's recommendations or limitations. Trailer brakes are recommended for towing loads in excess of 1500 lbs. Always follow the manufacturer's installation instructions and always install on the specified vehicle. Before installing hitch, check that the attachment points are in good condition.

Failure to follow these guidelines will void warranty. Any modifications to this hitch will void warranty.

WARNING: Use only a 5/8" diameter hitch pin with locking device to secure a ball mount in this receiver. Be sure to check the hitch pin and hair pin for positive locking placement before towing trailer.

NOTE: Some states require a clear view of license plates. Remove trailer ball and/or ball mount when not in use if it restricts view.

COMPLETE PARTS LIST			
<i>Item</i>	<i>Part #</i>	<i>Description</i>	<i>Quantity</i>
1.	1299-02	Receiver Assembly	1
2.	1805-04	Frame Bracket	1
3.	1806-05	Frame Bracket	1
4.	1213-07	Spare Tire Hanger Bracket	1
5.	1027-03	1/2 Spacer Plate	4
6.	1903-06	1/4 Reinforcement Plate	2
7.	2835-08	1/2 Square Hole Plate	6
8.	2866-02	1/2-13 x 2 Carriage Bolt Gr. 5	6
9.	1835-08	1/2-13 x 1-1/4 Hex Bolt Gr. 5	8
10.	1828-03	1/2-13 Hex Flange Locknut	14
11.	2372-04	12mm x 1.75 x 40mm Hex Bolt CI 10.9	2
12.	3119-03	1/2 HD Flatwasher	2
13.	4892-07	Pull Wire	1

CLASS V
WEIGHT CARRYING HITCH CAPACITY
5,000 LBS. MAXIMUM TRAILER WEIGHT 500 LBS. MAXIMUM TONGUE WEIGHT
WEIGHT DISTRIBUTING HITCH CAPACITY
10,000 LBS. MAXIMUM TRAILER WEIGHT 1,000 LBS. MAXIMUM TONGUE WEIGHT

**1987-EARLIER CHEVROLET & GMC P/U
CHEVROLET & GMC CARRYALL
INTERNATIONAL P/U & TRAVELALL**

1. Remove spare tire from under vehicle, if so equipped. It will be reinstalled after hitch is in place. It may be necessary to remove the spare tire hanger bolt from vehicle frame if it interferes with positioning the hitch.
2. Assemble the side frame brackets #2 and #3 with the receiver assembly #1, so that the tabs on the frame brackets are pointing towards the CENTER of the hitch. Use the four 1/2" hex bolts #9 and the four 1/2" hex flange locknuts #10 per side. See Illustration 1 on next page.
3. Position the assembled hitch up against the bottom of the truck frame so that the rear tab, on each side, is approximately 1" to 2" from the end of the truck frame. If the spare tire hanger bolt interferes with the hitch placement, remove it from the truck frame. It will be relocated later in the installation.

NOTE: On some after market step bumper installations there are bumper brackets mounted to the bottom surface of the truck frame. These brackets must be removed before hitch can be installed. The step bumper should not be used for towing if these brackets have been removed.

4. On Chevrolet and GMC pickup applications, there may be a spring shackle hanger gusset attached to the inside of the spring shackle and to the bottom of the truck frame, in the area where the forward most hitch attachment point must be located. On these applications you will need to cut a small section from the edge of this gusset and flatten part of it so that the hitch can be located correctly. See Illustration "A" on next page, for details of this procedure.
5. With the hitch placement set, drill three 1/2" attachment holes in each truck side frame using the holes in the hitch frame bracket tabs as guides. In some applications there may be existing holes in the truck frame which may be used if they line up with the hitch frame bracket holes. Also, there may be a rivet in the truck frame which is in line with one of the hitch frame bracket holes. If this is the case, the rivet must be drilled out and hole used for hitch attachment.
6. The spare tire hanger bracket #4 may be placed at one of the hitch attachment points as shown on Illustration 1a on the back page of this document.
7. Place a 1/2" carriage bolt #8 into a square hole plate #7 and place this assembly into the truck frame so that the carriage bolt drops down through the holes drilled in the frame and the holes in the hitch frame bracket tabs. On some applications access to the inner section of the frame may be tight. By using the supplied pull wire, it will be easier to place the bolts into the frame. See Illustration 4 on back page of this document, which show this procedure.
8. Tighten the 1/2" bolts to 75 ft. lbs. torque. Failure to tighten bolts as described may result in fastener loss or failure.
9. Place the spare tire hanger bolt into the hanger bracket #4, if it was installed. Secure the spare tire up under vehicle.

CAUTION: Repositioning this hanger bolt will shift the location of the spare tire. Be sure to check for adequate clearance between the tire and the exhaust system, brake lines and the differential. Exhaust system modifications may be required to retain the under vehicle spare tire mounting.

**FORD P/U (full size)
DODGE RAMCHARGER**

**FORD BRONCO
PLYMOUTH TRAIL DUSTER**

DODGE P/U (full size)*

1. Remove the spare tire from under the vehicle, if so equipped. It will be reinstalled after hitch is installed. It may be necessary to remove the spare tire hanger bolt from vehicle frame if it interferes with hitch installation.
2. Assemble the side frame brackets #2 and #3 with receiver assembly #1, so that the tabs on the frame brackets are pointing to the OUTSIDE of the hitch. Use the four 1/2" hex bolts #9 and the four 1/2" hex flange locknuts #10 per side. See Illustration 2 on next page.

3a. DODGE AND PLYMOUTH APPLICATIONS:

Position hitch assembly up against the bottom of the vehicle frame so that the rear tab on each side is approximately 1" from the end of the vehicle frame. If the spare tire hanger bolt interferes with hitch placement, remove it from the truck frame. It will be relocated later in the installation. NOTE: Some after market step bumper installations have bumper brackets mounted to the bottom of the vehicle frame. These brackets must be removed before hitch can be installed. The step bumper should not be used for towing if these brackets are removed.

***1994-NEWER DODGE P/U NOTE:** Due to variations in truck frame width, a special spacer kit may be needed so hitch can be installed. Order spacer kit #2150-03 from Valley or your local dealer.

3b. FORD P/U AND BRONCO APPLICATIONS:

Position hitch assembly up against the bottom of the vehicle frame so that edge of the rear frame bracket tab is even with the end of the truck frame. See Illustration 5 on next page. Or the hitch can be placed so that the hole in the last frame bracket tab is over the rivet near the end of the frame on some vehicles. The rivet can be drilled out and holes used for hitch attachment. See illustration 6

4. With hitch placement set, drill three 1/2" attachment holes in each vehicle frame, using the holes in the hitch frame brackets as guides. In some applications there may be some existing holes in the frame which may line up with hitch attachment holes.
5. If the spare tire hanger bolt was removed because of hitch interference, place the spare tire bracket #4, supplied with the hitch, at one of the hitch attachment points as shown on Illustration 1a on back page of this document.
6. Place a 1/2" carriage bolt #8 into a square hole plate #7 and place this assembly into the truck frame so that the carriage bolts drop down through the vehicle frame and hitch frame brackets. On some applications, access to the inner section of the frame may be tight. By using the the pull wire supplied, it will be easier to position these parts into the frame. See Illustration 4 on back page of this document.
7. On some Ford applications, it will be necessary to place the 1/2" spacer plate #5 between the truck frame and hitch frame brackets at the center attachment points because of an irregularity in the truck frame. See Illustration 2 on next page. This will level the receiver.
8. Tighten all 1/2" bolts to 75 ft. lbs. torque. Failure to tighten bolts as described may result in fastener loss or failure.
9. Place the spare tire hanger bolt into hanger bracket #4, if it was installed. Secure spare tire up under the vehicle. On some applications, the end of the spare tire support may make contact with the hitch frame bracket. In such cases, the tire support must be modified to clear the hitch frame bracket.
CAUTION: Repositioning the hanger bolt will shift the location of the spare tire. BE SURE to check for adequate clearance between the tire and the exhaust system, brake lines and the differential. Exhaust system modifications may be required to retain the under vehicle spare tire mounting.

1988-NEWER CHEVROLET & GMC P/U

1. Lower and remove the spare tire from under the truck. This will allow for easier hitch installation. the tire will be put back in place after the hitch is installed.
2. Assemble the hitch side frame brackets #2 and #3 with the receiver assembly#1so that the three tabs on each frame bracket are pointing to the OUTSIDE of the assembly. Use the four 1/2" hex bolts #9 and the four hex flange locknuts #10 per side. See Illustration 3 on next page.
3. On the end of each truck frame there will be a slot. On trucks with a factory installed bumper, there will be a 12mm bolt in each of these locations. Remove these two existing 12mm bolts if they are present.
4. Position the assembled hitch against the bottom of the truck frame so the rearmost slot in each hitch frame bracket is in line with slot in the vehicle frame and the weld nut in the bumper bracket. Use the longer 12mm bolts and the 1/2" HD flatwasher #12 supplied with the hitch, to attach the hitch assembly to the truck frame at the end locations. See Illustration 3 on next page.
- 4a. If the truck does not have a factory installed bumper, attach the hitch assembly to the truck frame at the end slot with a 1/2" carriage bolt #8, a square hole plate #7, a HD 1/2" flatwasher #12 and 1/2" flange locknut #10. Bolt securely in place.
5. Due to variations in truck frames, the center hitch attachment point may need to be drilled in the truck frame. Use the hole in the center tab as guides to drill these holes. See Illustration 3 on next page.
6. Place a 1/2" carriage bolt #8 into a square hole plate #7. Place this assembly into the truck frame over the drilled holes so that the carriage bolt drops down through the drilled hole and hole in hitch frame bracket tab. Bolt securely in place.
7. At the forward attachment hole, place a 1/4" reinforcement plate #6 in the truck frame over the large existing hole. Place a carriage bolt and square hole plate over plate #6 and allow the bolt to drop down through plates, frame and hitch frame bracket tab. Bolt securely in place.
8. Tighten all bolts to 75 ft. lbs. torque. Failure to tighten bolts as described may result in fastener loss or failure.
9. Raise the spare tire back up into its storage location. Be sure that the wheel support bracket on the end of the cable is positioned side to side across the center of the wheel. This will assure that correct wheel support will take place. The tire may need to be pushed forward slightly when raising into position, to clear the hitch.

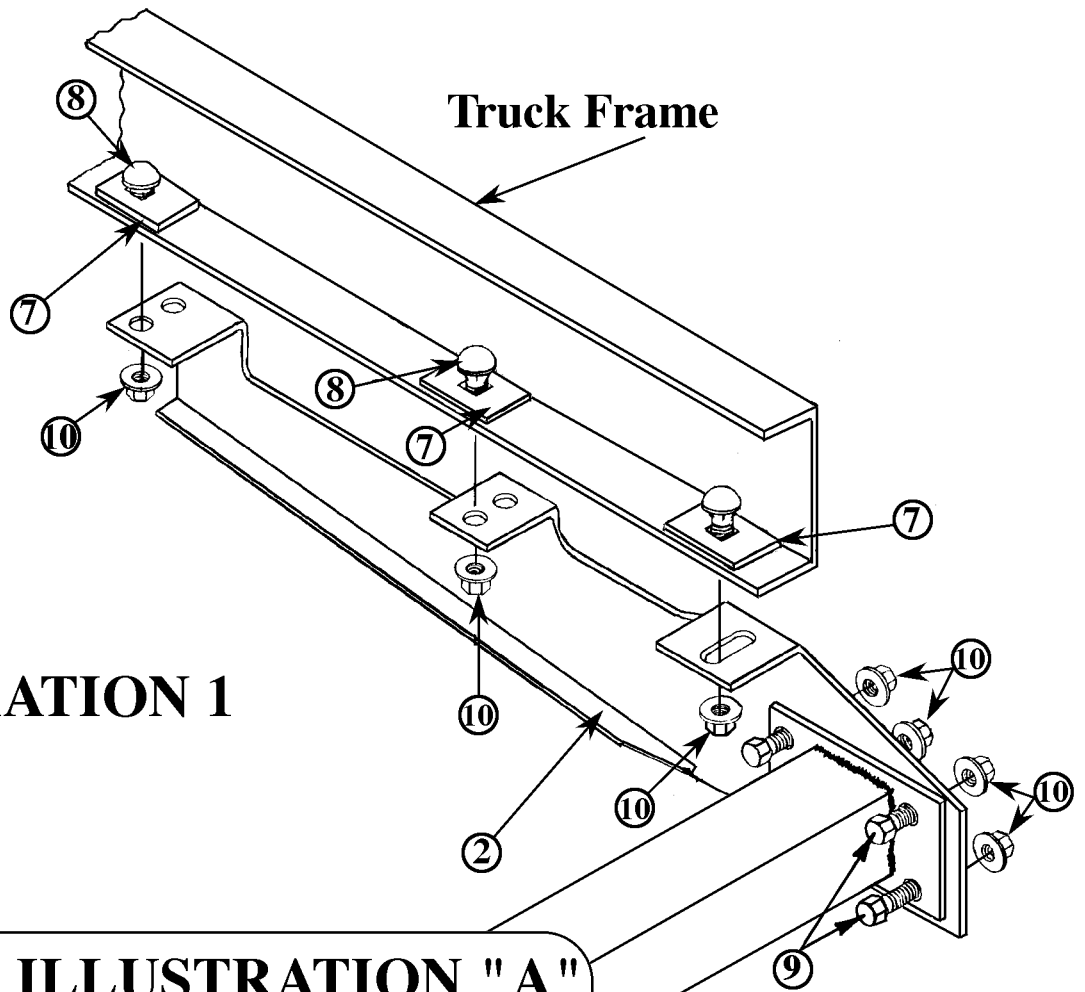


ILLUSTRATION 1

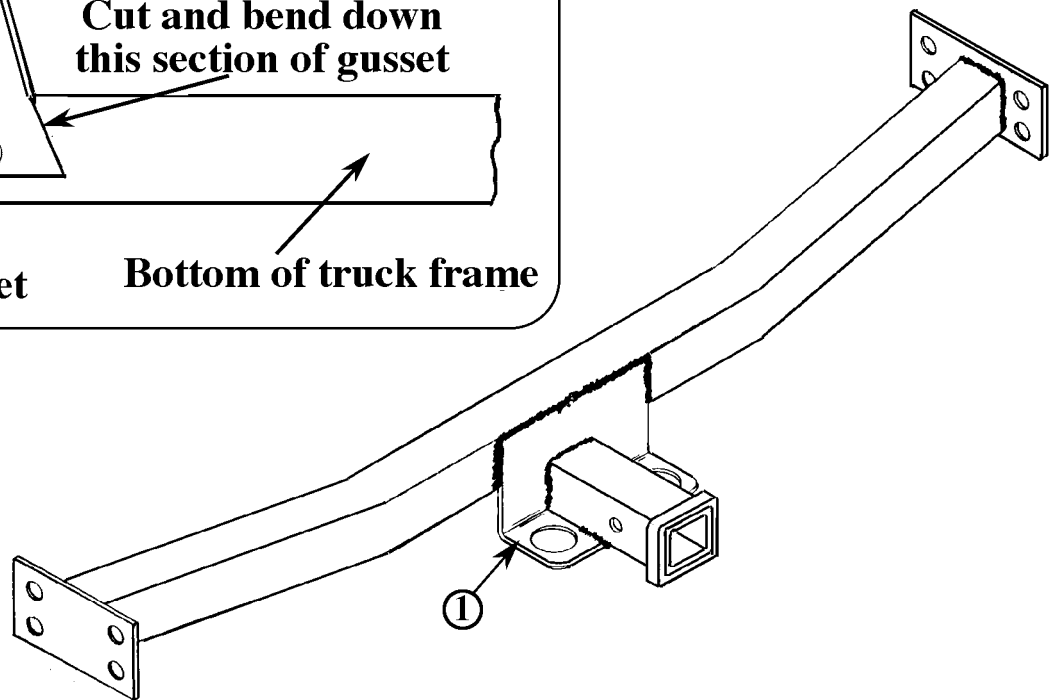
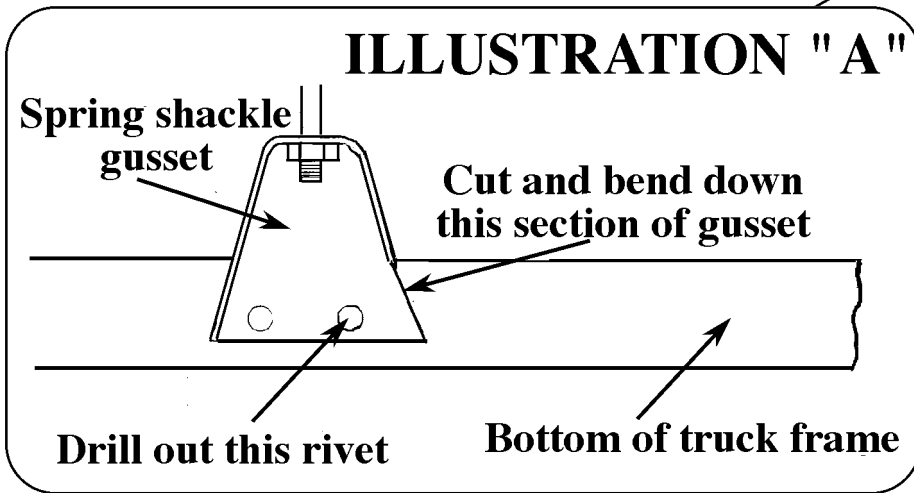
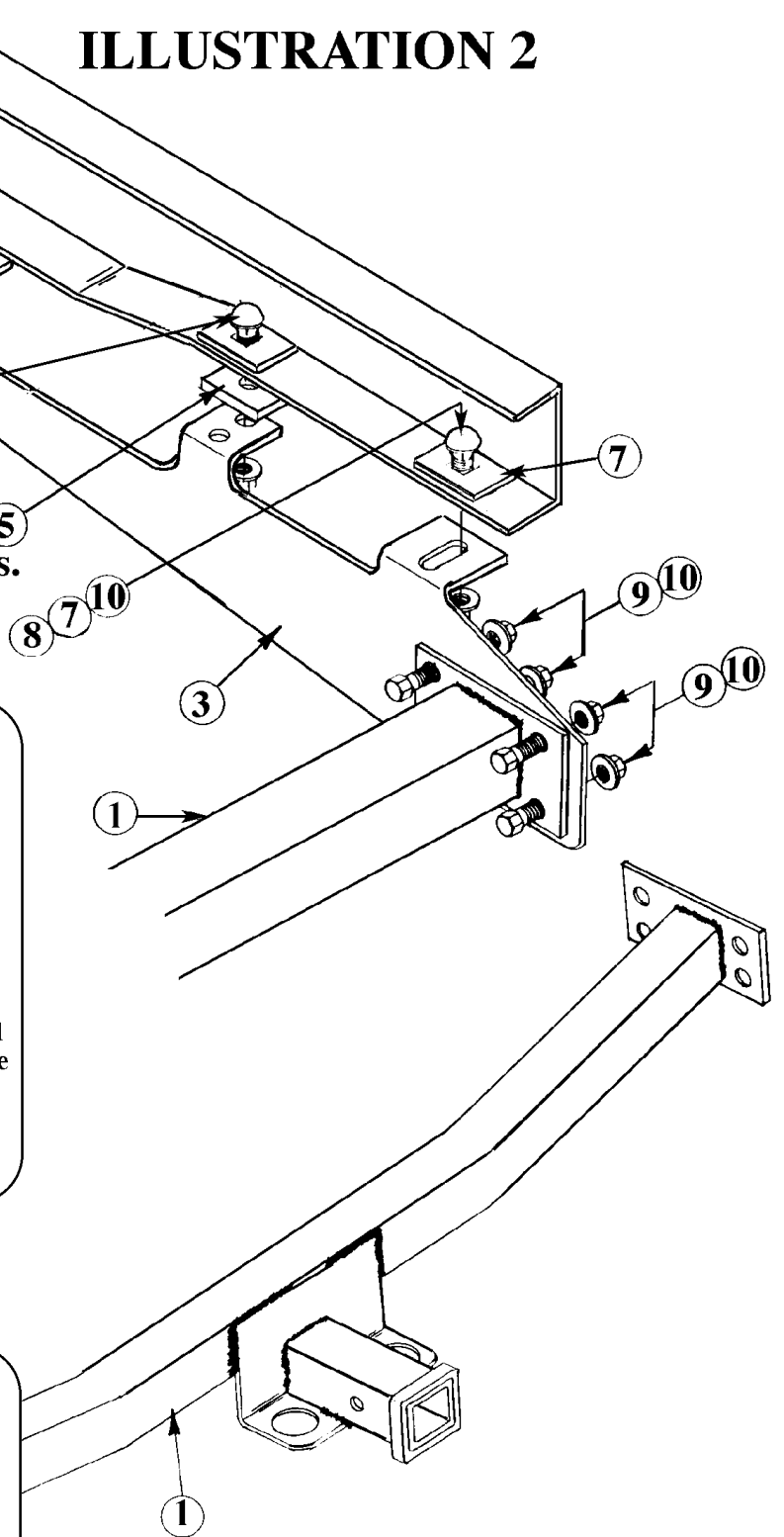
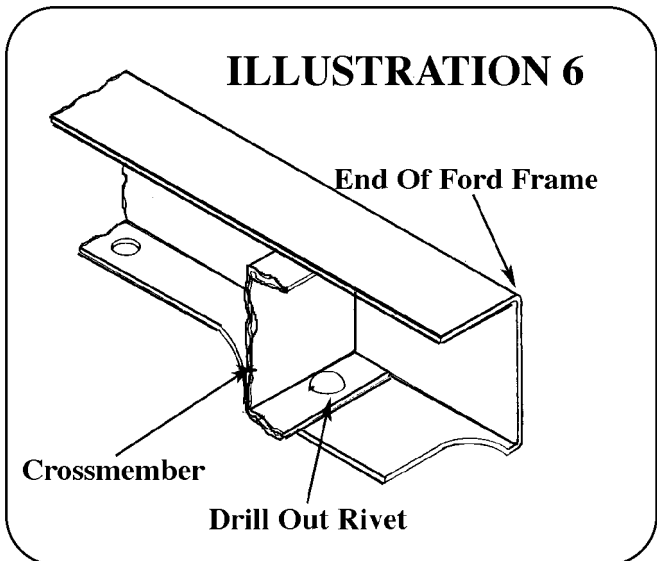
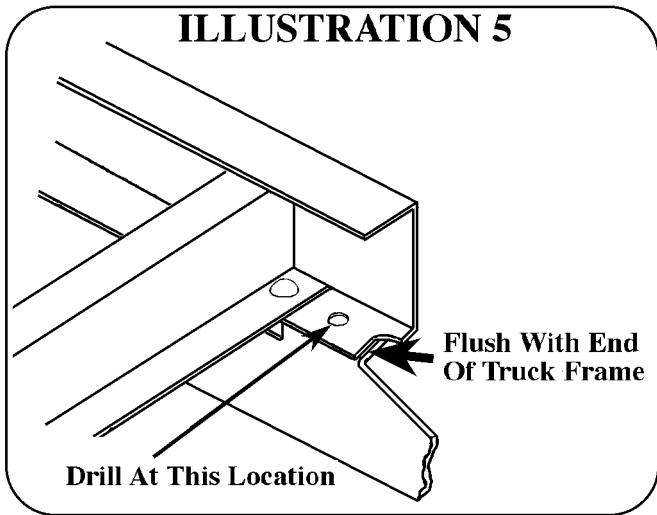
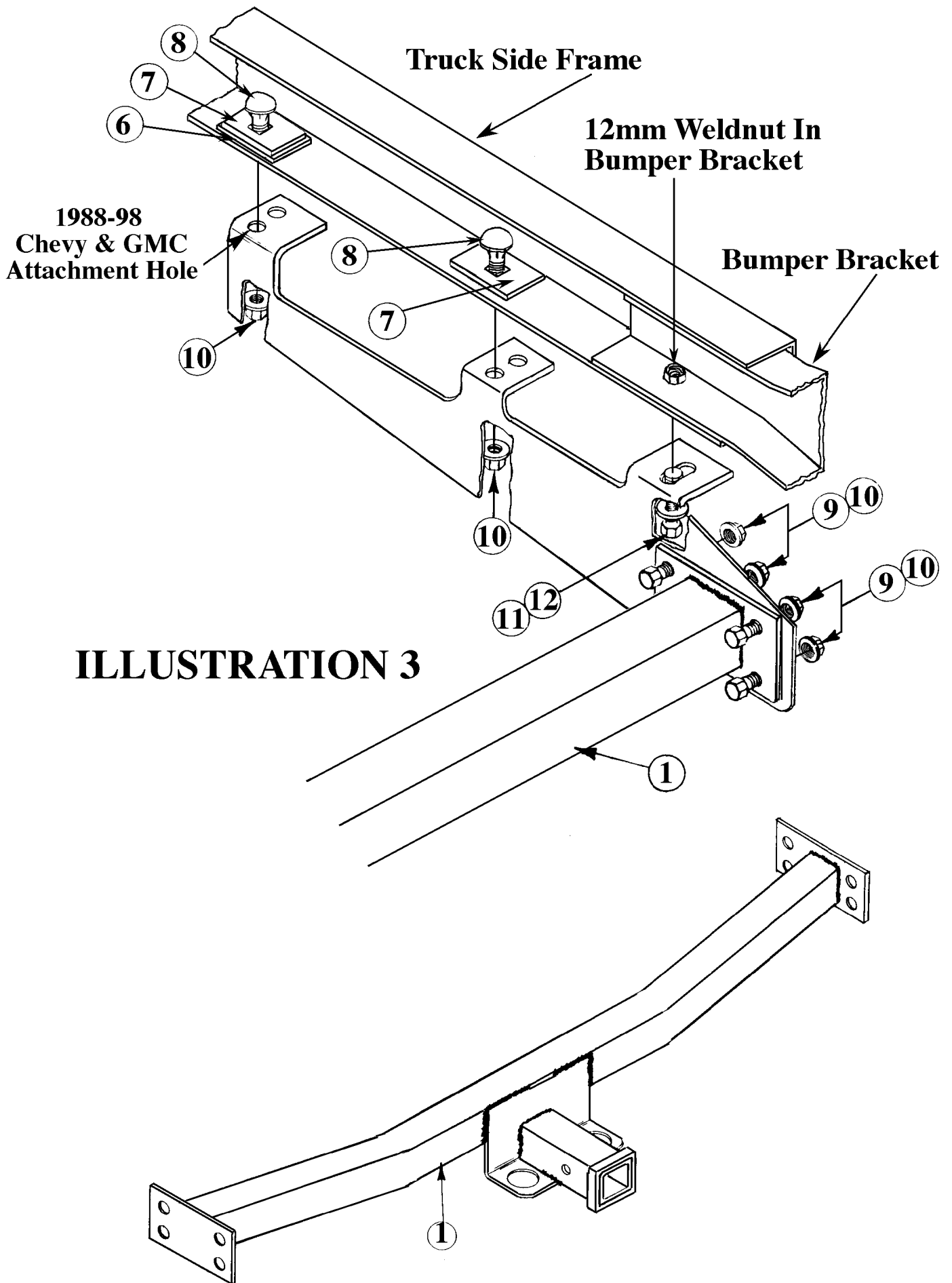


ILLUSTRATION 2

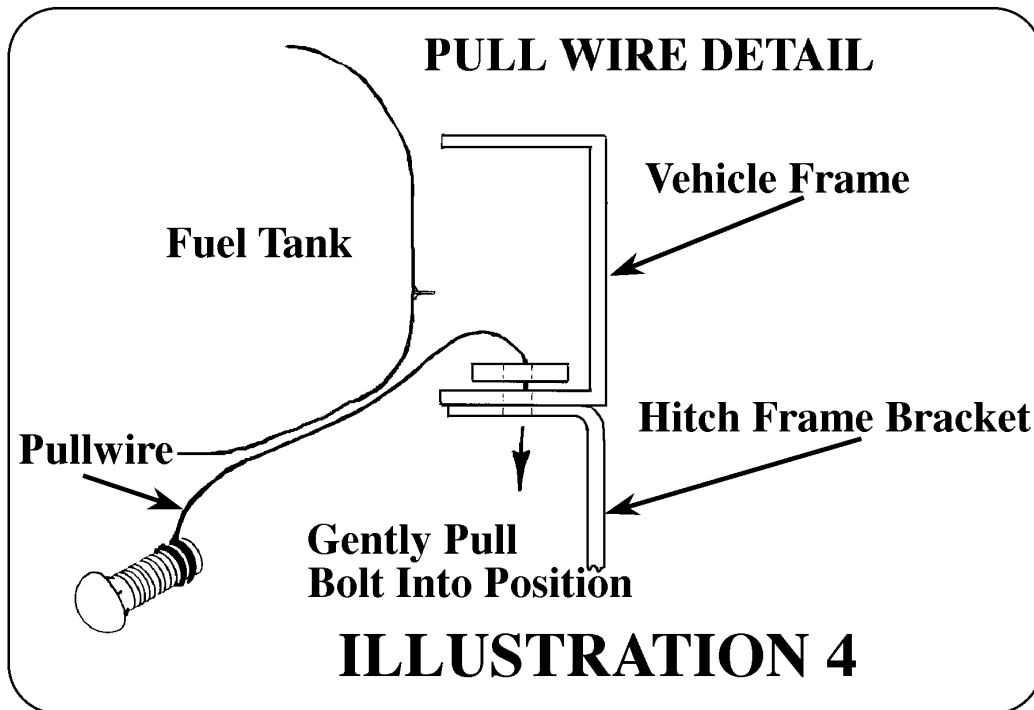
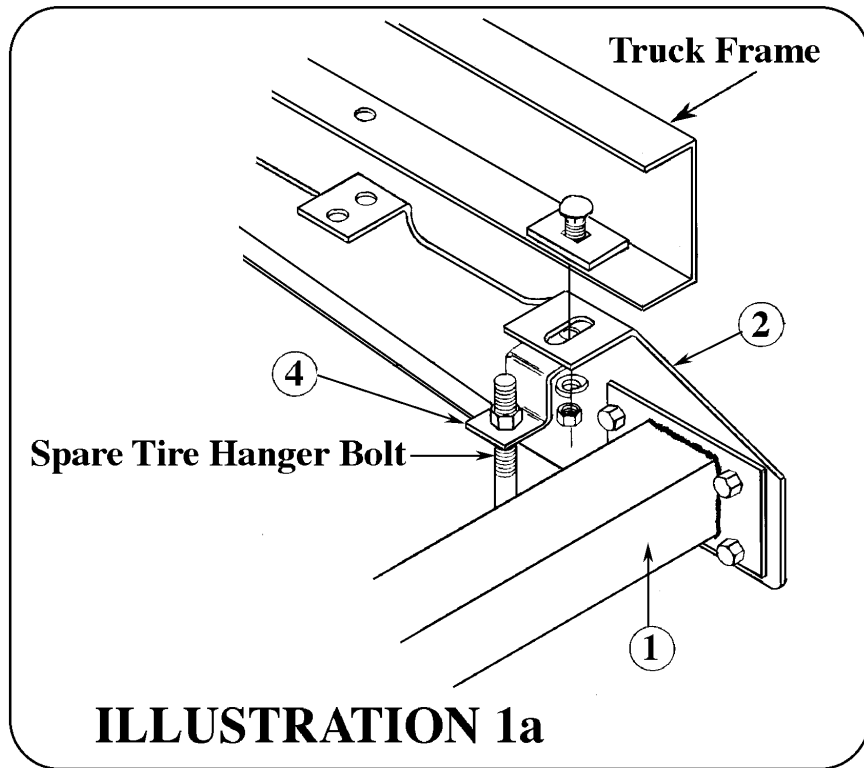
Ford & Dodge
attachment hole

Use 1/2" spacers (5)
on Ford applications.





NOTE: Spare tire hanger bracket #4 can be located either inboard or outboard of the hitch frame bracket or at other locations on the truck frame as required for attachment. This illustration shows it mounting to the inboard side of hitch frame bracket.



For information regarding the installation of this product, go to: www.towingsupport.com
or Email us at: tech@towingsupport.com or Call our Technical Support Team at: 1-800-344-3230
This product complies with regulation V-5, C.S.A Standard D-264 and safety requirements for connecting devices
and towing systems of the State of New York