

INSTALLATION INSTRUCTIONS

MODEL NO. 65970

APPLICATION: 1984-95 Dodge Caravan & Grand Caravan
 1984-95 Plymouth Voyager & Grand Voyager Van
 1990-95 Chrysler Town & Country Van
THIS RECEIVER WILL NOT FIT THE ALL WHEEL DRIVE MODEL VAN

WARNING

Although this hitch is designed to safely tow its rated load, we recommend that you consult your vehicle owner's manual for possible manufacturer's recommendations or limitations. Always follow the manufacturer's installation instructions and always install on the specified vehicle. Before installing hitch, check that the attachment points are in good condition.

Failure to follow these guidelines will void warranty. Any modifications to this hitch will void warranty.

WEIGHT CARRYING HITCH CAPACITY

**3500 LBS. MAXIMUM TRAILER WEIGHT
 350 LBS. MAXIMUM TONGUE WEIGHT**

Trailer brakes are recommended for towing loads in excess of 1500 lbs.

COMPLETE PARTS LIST

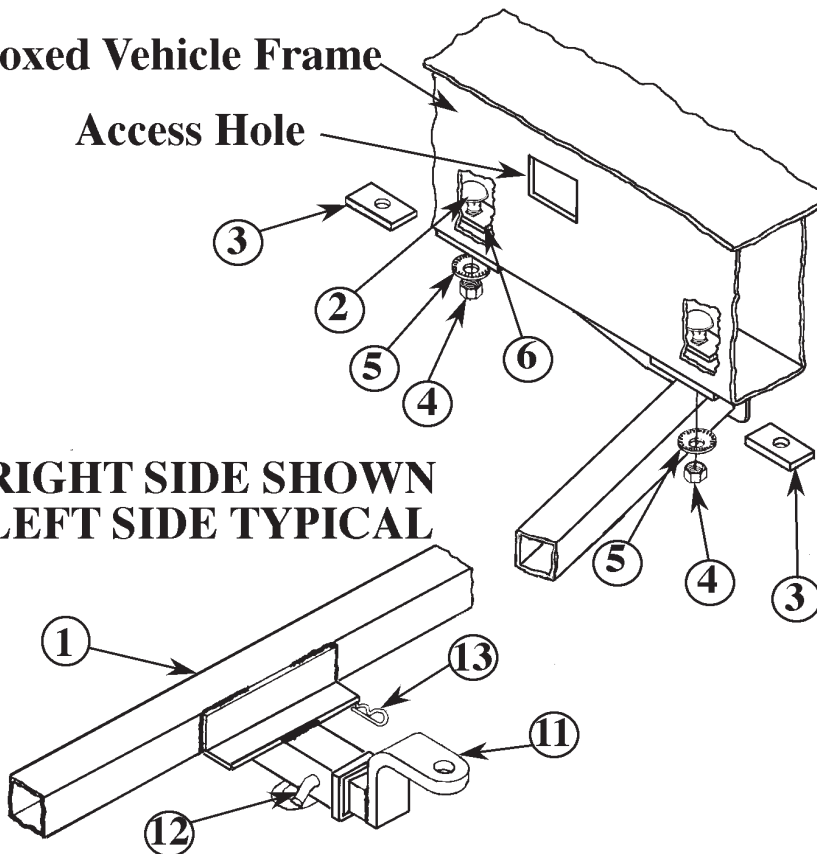
Part	Description	Quantity
1.	Hitch Assembly	(1)
2.	4349-09 Square Hole Plate	(4)
3.	1027-03 1/2 Spacer Plate	(4)
4.	1862-03 1/2-13 Hex Nut	(4)
5.	3730-05 1/2 Conical Washer	(4)
6.	2866-02 1/2-13 x 2 Cge. Bolt GR 5	(4)
7.	2436-03 8mm x 1.25 Hex Nut	(1)

Part	Description	Quantity
8.	2537-03 8mm x 1.25 x 35mm Hex Bolt	(1)
9.	2819-07 Tailpipe Bracket	(1)
10.	4892-07 Pull Wire	(1)
11.	1090-08 Ball Mount	(1)
12.	1083-04 Hitch Pin	(1)
13.	1335-03 Hair Pin	(1)
14.	4751-04 Receiver Cover	(1)

Boxed Vehicle Frame

Access Hole

**RIGHT SIDE SHOWN
 LEFT SIDE TYPICAL**



1. On the standard length van with full size spare tire, it will be necessary to remove the tire from under the vehicle before hitch can be installed. The spare tire will be put back in place after the hitch is installed. On some applications there will be a spare tire support bracket at the forward edge of the spare tire. Trim this bracket as shown on Illustration 2, if your vehicle is so equipped.
2. Locate the rubber tailpipe hanger that is attached to the right rear vehicle frame. Remove from its frame attachment point. Keep the 8mm bolt in the rubber hanger. Push the tailpipe and hanger away from the vehicle frame. Position the tailpipe bracket #9 against the vehicle frame in line with the original hanger bracket attachment hole. Bolt bracket in place with the 8mm x 35mm hex bolt #8 supplied with the hitch. Attach the rubber tailpipe hanger to the new hanger bracket with the original 8mm bolt and 8mm hex nut #7 supplied with the hitch. See Illustration 3.
3. Position the hitch assembly up against the bottom of the vehicle frame and align the rearmost hole in the hitch frame bracket with the last hole in the vehicle frame. Look at the forward hole in the hitch frame bracket. If it is in line with an existing hole in the vehicle frame, note its location. If it does not line up with an existing hole, mark the vehicle frame at the hitch frame bracket hole. Inspect the hitch receiver clearance at the lower lip of the urethane bumper covering. If the receiver pushes up against the this lip, use the 1/2" thick spacers #3 between the frame and hitch when bolting hitch in place. If the receiver clears the bumper lip, do not use the spacers when bolting hitch in place.
4. If the vehicle frame was marked for attachment hole in Step 3, drill a 1/2" attachment hole in bottom of vehicle frame at this time.
5. Assemble a 2" carriage bolt #6 and square hole plate #2 with a pull wire. Carefully thread the pull wire into the box frame through an access slot and pull the fasteners into frame so that the carriage bolt will drop out through holes in bottom of frame at hitch attachment points. See "Pull Wire" illustration.
6. Carefully position the hitch assembly up against the bottom of the vehicle frame so that the previously installed carriage bolts drop down through holes in the hitch frame brackets. Bolt hitch in place as illustrated.
7. Tighten all bolts to 75 ft. lbs. torque. Tighten the 8mm bolt to 22 ft. lbs. torque. Failure to tighten bolts as described may result in fastener loss or failure.
8. Slide the ball mount #11 into receiver and secure with hitch pin #12 and hair pin #13.

WARNING: Use only the ball mount supplied with this hitch. Use this hitch only as a weight carrying hitch.

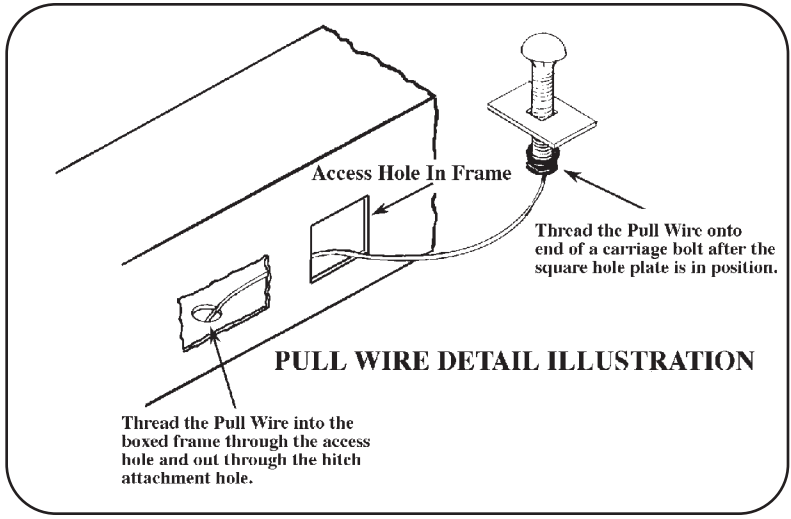
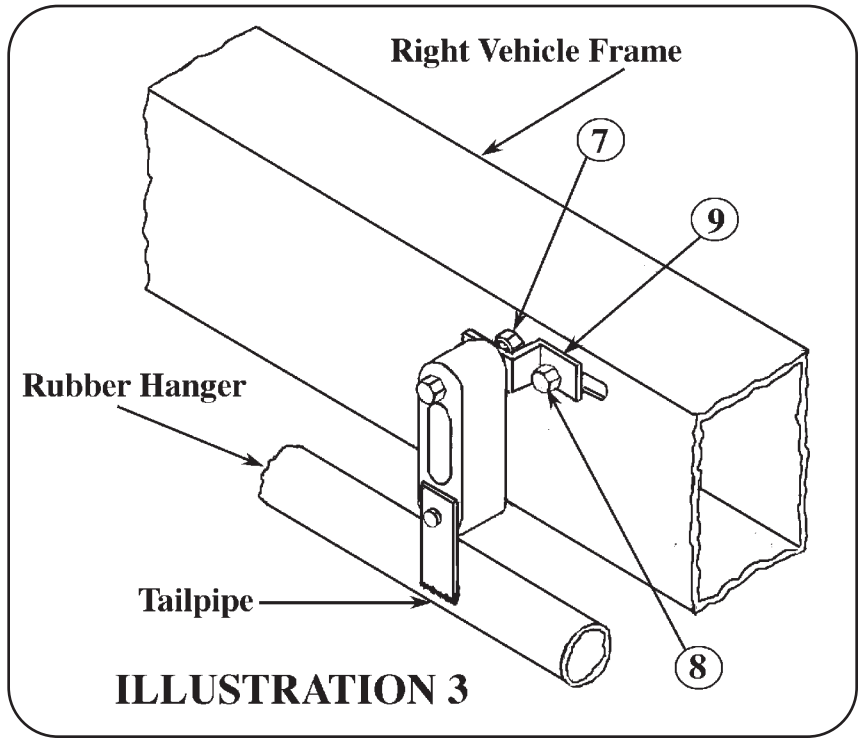
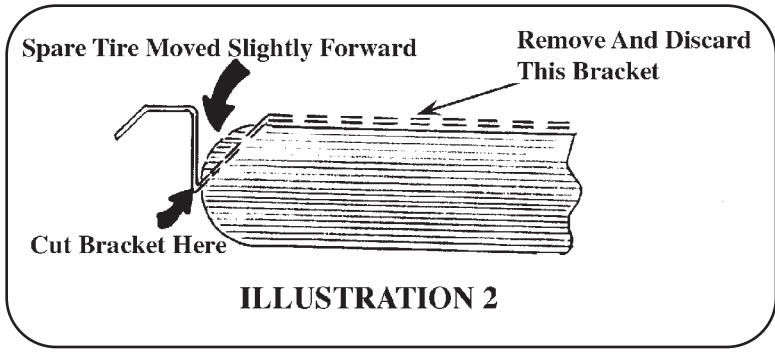
DO NOT use with any type of weight distributing hitch.

WARNING: If this hitch is used with any auxiliary load carrying product, such as bicycle or cargo carriers, the loaded weight must not exceed 200 lbs. including the weight of the carrier. The loaded carrier weight with the extended leverage may damage hitch and/or attachment points on vehicle.

WARNING: Be sure to check the hitch pin and hair pin for positive locking placement before towing trailer.

NOTE: When hitch is not being used, remove the ball mount from receiver and place receiver cover into receiver opening.

NOTE: Some states require a clear view of license plates. Remove trailer ball and/or ball mount when not in use if it restricts view.



For information regarding this product, or our warranty, contact your dealer or write to:
 "CUSTOMER SERVICE MANAGER" P.O. Box 850, Lodi, CA 95241

This product complies with regulation V-5, C.S.A Standard D-264 and safety requirements for connecting devices and towing systems of the State of New York